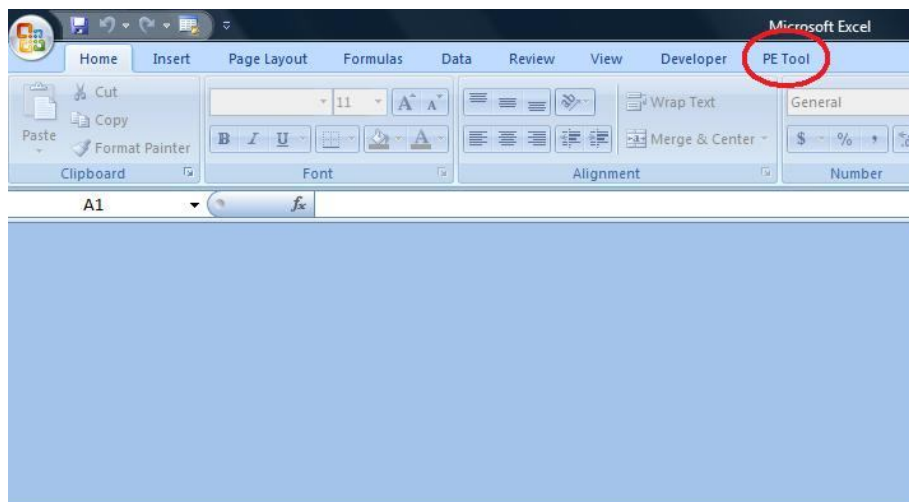


## Installation of the product

The product consists of two Excel 2007 - compatible add-ins named PE\_Interface.xlam and PE\_CppFunctions.xll. Each of them should be installed using the instructions below.

After both add-ins are installed, you will see a new tab, PE Tool, in the very top menu line:



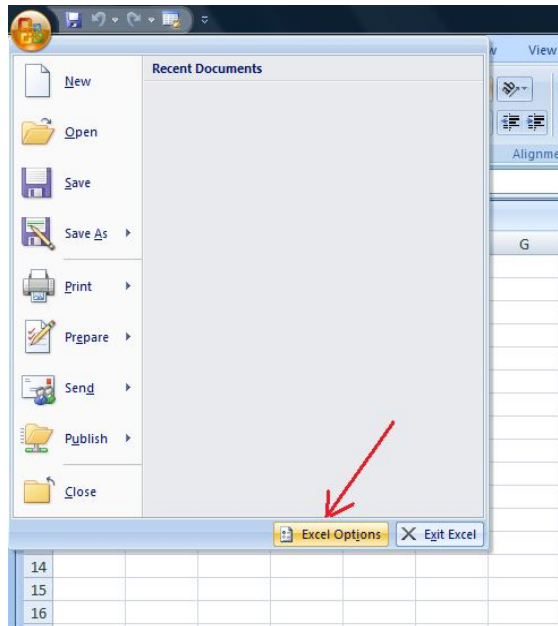
PE Tool tab contains three buttons that launch the application, display help, and generate a sample data file. The best way to test-drive the tool is to get sample data first and then use Help to obtain instructions on how to feed the dataset into the application to obtain the results.

---

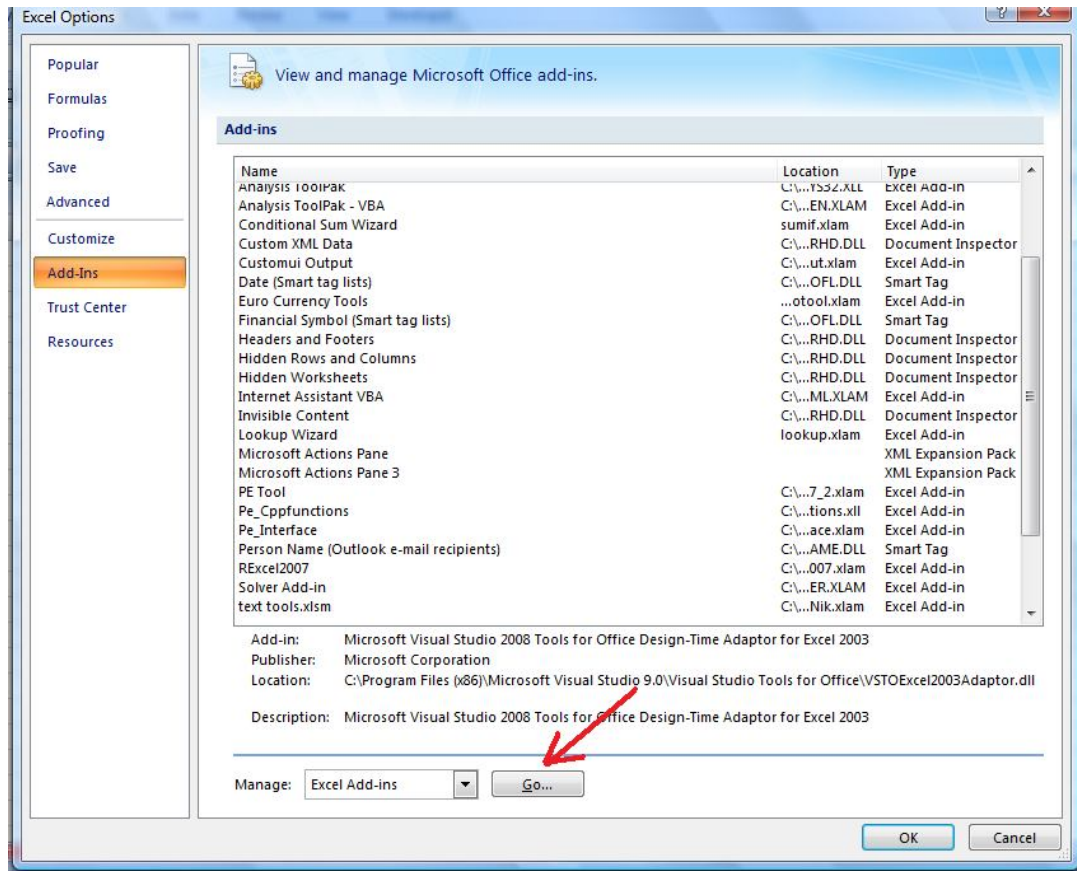
---

## How to load or unload an Excel add-in program

1. Open Excel, click the **Microsoft Office Button** , and then click **Excel Options** :



2. Click the **Add-Ins** category.
3. In the **Manage** box, click **Excel Add-ins**, and then click **Go**:



4. To load an Excel add-in, do the following:

In the **Add-Ins available** box, select the check box next to the add-in that you want to load, and then click **OK**. If the add-in that you want to use is not listed in the **Add-Ins available** box, click **Browse**, and then locate the add-in. If the add-in is not currently installed on your computer, click **Yes** to install it.

5. To unload an Excel add-in, do the following:

1. In the **Add-Ins available** box, clear the check box next to the add-in that you want to unload, and then click **OK**.
2. To remove the add-in from the Office Fluent Ribbon, restart Excel.